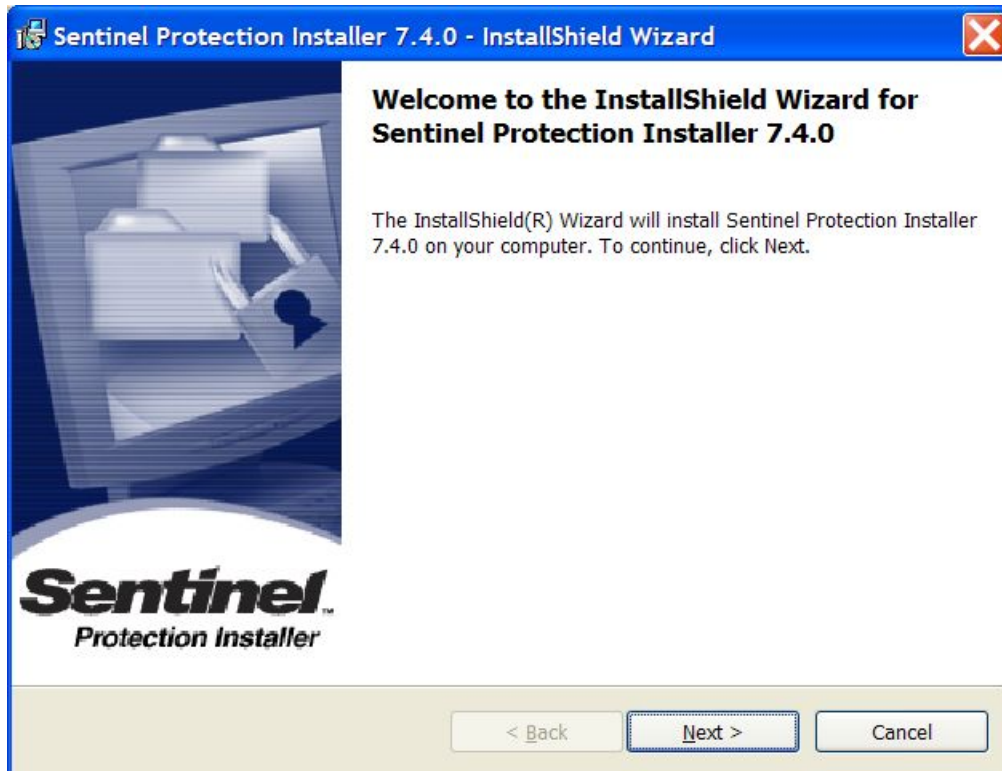


# **Safenet Dongle Installer Tutorial**

This tutorial will explain you how to install the Safenet Dongle Drivers 7.4.x on your Microsoft System. It will show you the different forms for a complete install. If you would like to make a custome install please read the description written by Safenet.

## 1 - First form



This is the first form of the installer. Please click on the Next button to start the installation.

Note : This panel can be different form this one if you have already installed a previous version.

## 2 - Licence form

**Sentinel Protection Installer 7.4.0 - InstallShield Wizard**

**License Agreement**  
Please read the following license agreement carefully.

**Sentinel Protection Installer**

**License Grant/Warranty for Software**

This License describes limited rights granted by SafeNet, Inc. and/or one of its subsidiaries (such grantor, "Seller") to the Buyer.

**A.** The term "Software", as used herein, shall mean a program or programs consisting of machine readable logical instruction and tables of information designed as libraries or drivers to work in conjunction with Seller's Sentinel Keys ("Products"). Title to all Software furnished to Buyer hereunder shall remain in Seller. Seller grants to Buyer a non-exclusive, non-transferable

☒ I accept the terms in the license agreement

☐ I do not accept the terms in the license agreement

Print

InstallShield

< Back   Next >   Cancel

You have to accept the licence to be able to install the drivers. Once you have select the accept radio button, please click on the Next button to continue the installation.

### 3 - Setup type form



On this form you can choose between a complete or custom installation. Please select the Complete radio button and then click on the Next button to continue the installation.

Note: If you choose the Custom installation an other form will be display to choose what you will install. Then go to the next step.

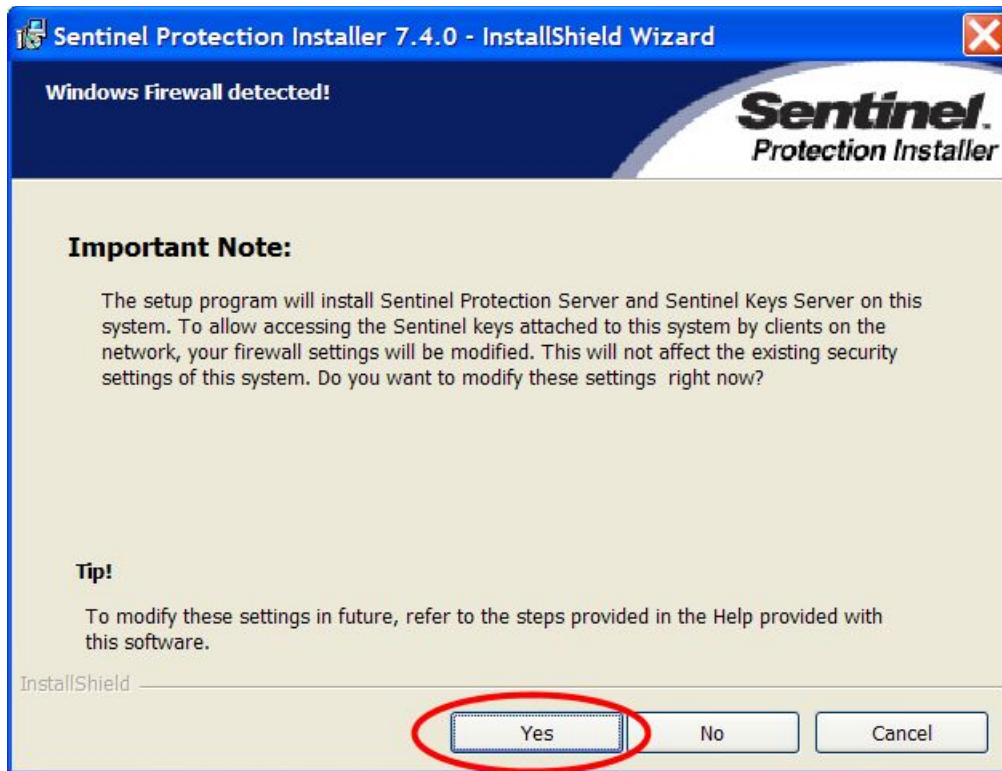
## 4 - Installation validation form



Please click on the Install button to validate the installation.

Note: Once this button pressed you won't be able to come back to change any option.

## 5 - Network form



You can choose here if you want to activate the network option of the Safenet Dongle drivers. If you have a network dongle you must click on the Yes button. If you have not a network dongle you can choose the button you want.

Note: Some console panel can appear. Don't worry it is normal.

## 6 - Status form



This form shows you the status of the installation. Please wait until the installation is completed.

## 7 - Last form



The installation is finished. Please click on the Finish button to close this panel. You will be maybe invited to restart your computer to complete the installation.